

The influence of vertebral geometrical parameters on lumbar spine loading

M. Putzer¹, S. Auer¹, W. Malpica², I. Ehrlich¹, N. Gebekken³, S. Dendorfer¹

¹ Ostbayerische Technische Hochschule, Germany

² Ortho Kinematics, USA

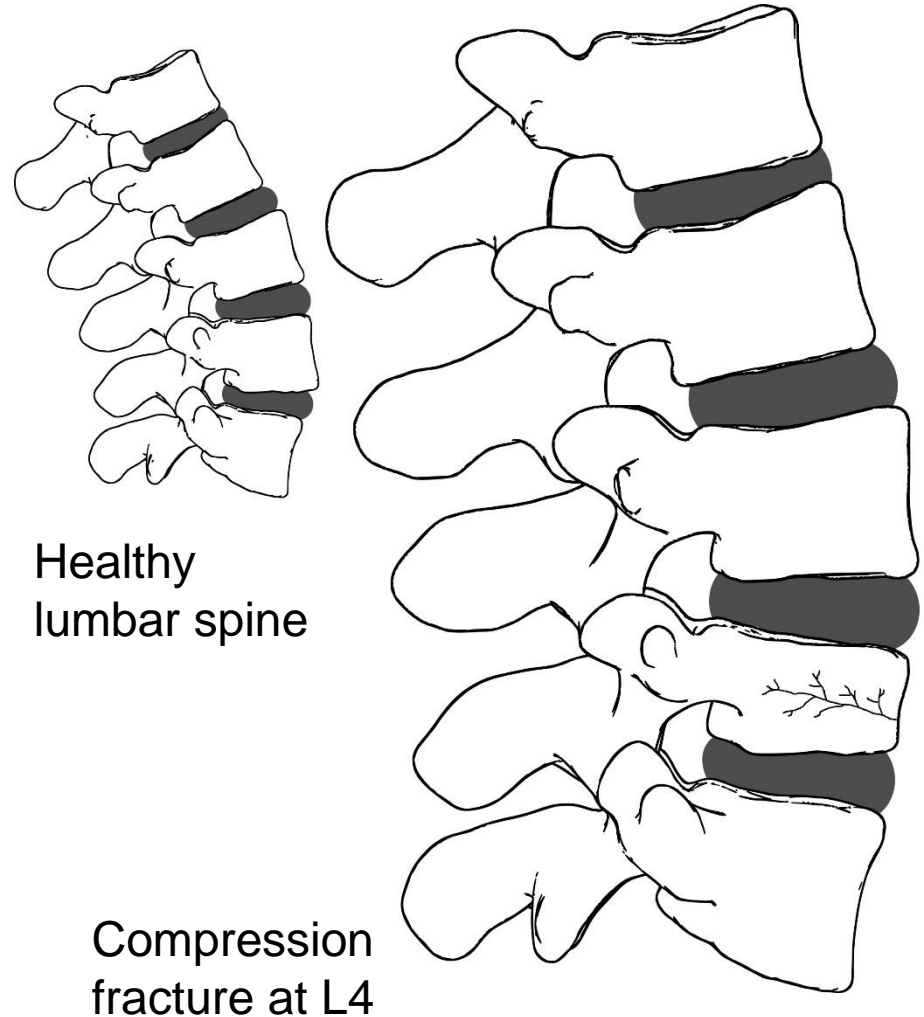
³ University of the Bundeswehr Munich, Germany

- ~10.000 students in 8 departments
- Mechanical Engineering
 - 1400 students
 - Programs in Mechanical Engineering, Industrial Engineering and Biomedical Engineering (started in 2011)



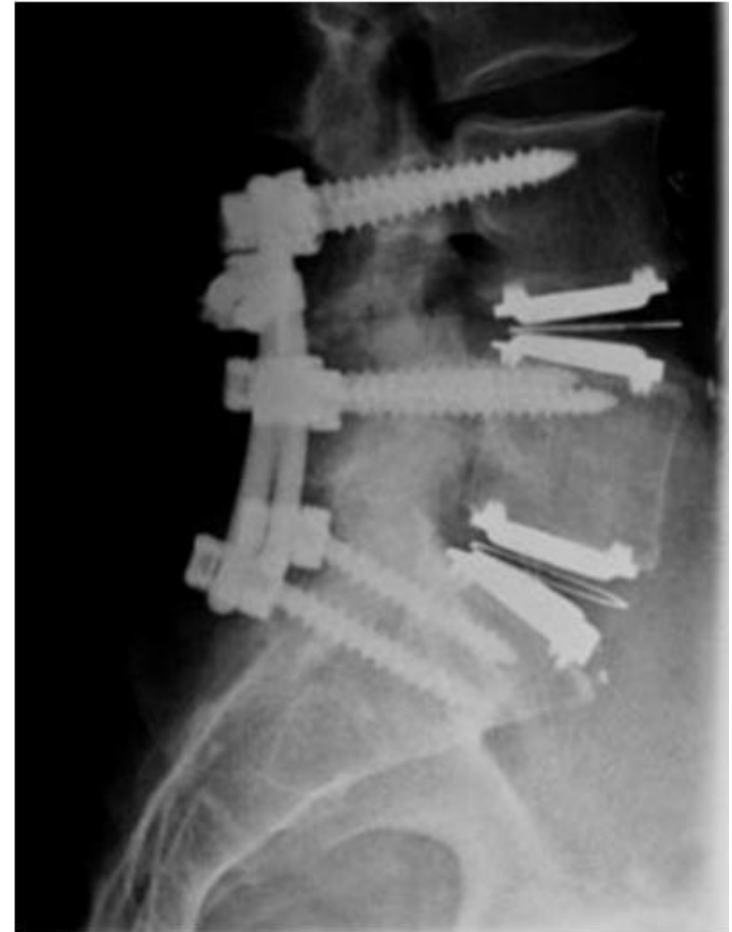
Introduction

- Back pain is very common in modern civilization
- Number of spine surgeries doubled from 2005 to 2011 (Klauber et al. 2012)
- Possible causes for back pain:
 - muscle tension
 - degenerative disc disease
 - compression fractures
 - facet joint degeneration
 - etc.



Introduction

- Back pain is very common in modern civilization
- Number of spine surgeries doubled from 2005 to 2011 (Klauber et al. 2012)
- Possible causes for back pain:
 - muscle tension
 - degenerative disc disease
 - compression fractures
 - facet joint degeneration
 - etc.



Rosen et al., 2007

- Different causes of back pain which are sometimes not easy to diagnose
- Success of surgery depends on surgeon's training level (Wang et al., 2013)
- A revision rate of 10.3% for lumbar interbody fusion for spinal stenosis is reported (Nemani et al., 2014)

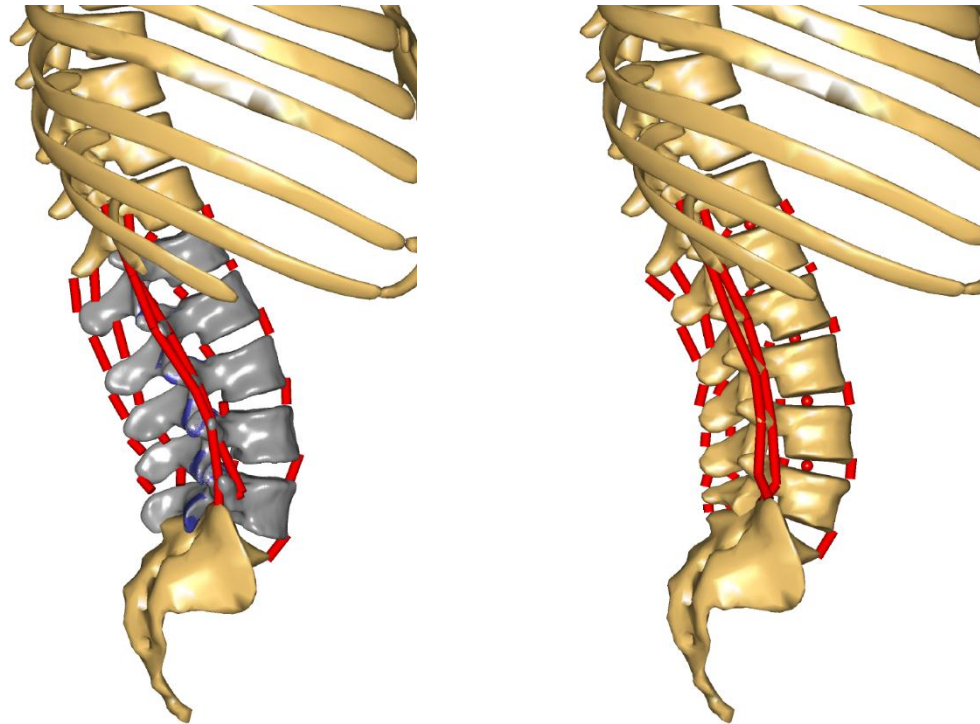


- Better understanding of lumbar spine loading is essential
- Only limited experimental data available



Subject-specific simulations

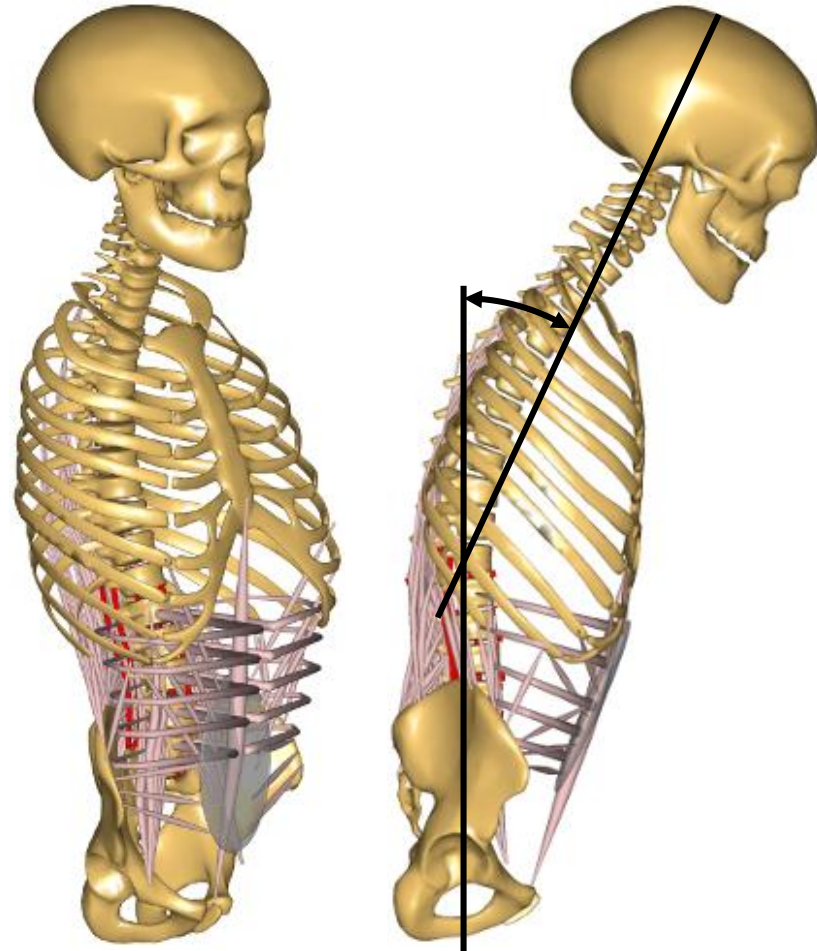
What is needed for subject-specific simulations?



- Which geometrical parameters are critical for a subject-specific model?
- How do ligament properties influence the results?

Musculoskeletal Model

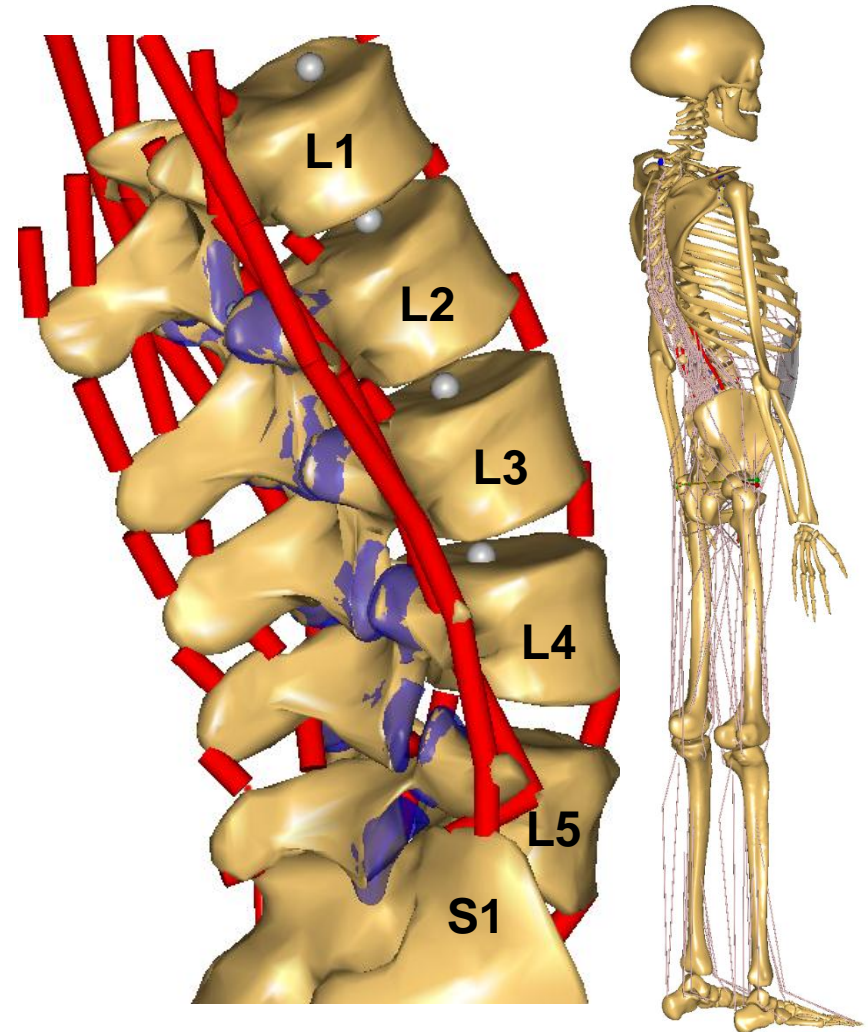
- Spine fixation with force dependent kinematics model (AMMR v1.4.1)
- Detailed modeling of the lumbar spine
- Postures are measured between pelvis and thorax
- FDK is used in the lumbar joints



Musculoskeletal Model

Modifications:

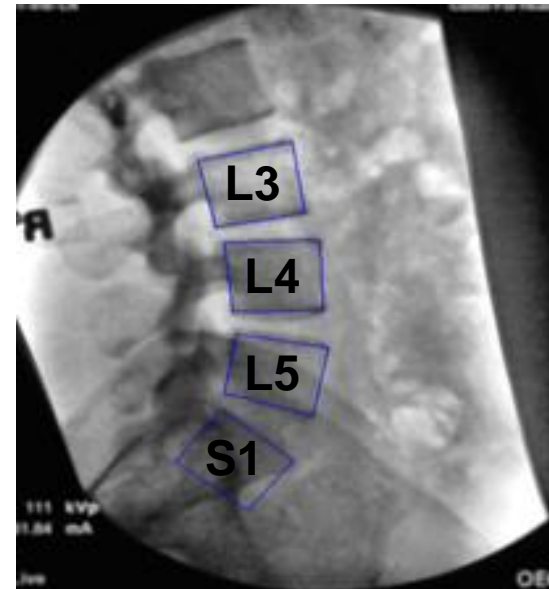
- Subject-specific vertebral geometry
- Attachment points for muscles and ligaments altered
- Axes of rotation aligned with data from fluoroscopic radiographs of a flexion motion (Ortho Kinematics, Inc.)



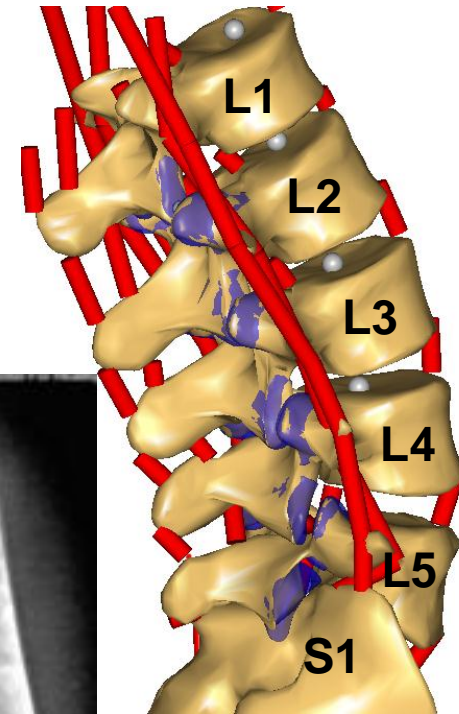
Musculoskeletal Model

Modifications:

- Subject-specific vertebral geometry
- Attachment points for muscles and ligaments altered
- Axes of rotation aligned with data from fluoroscopic radiographs of a flexion motion (Ortho Kinematics, Inc.)

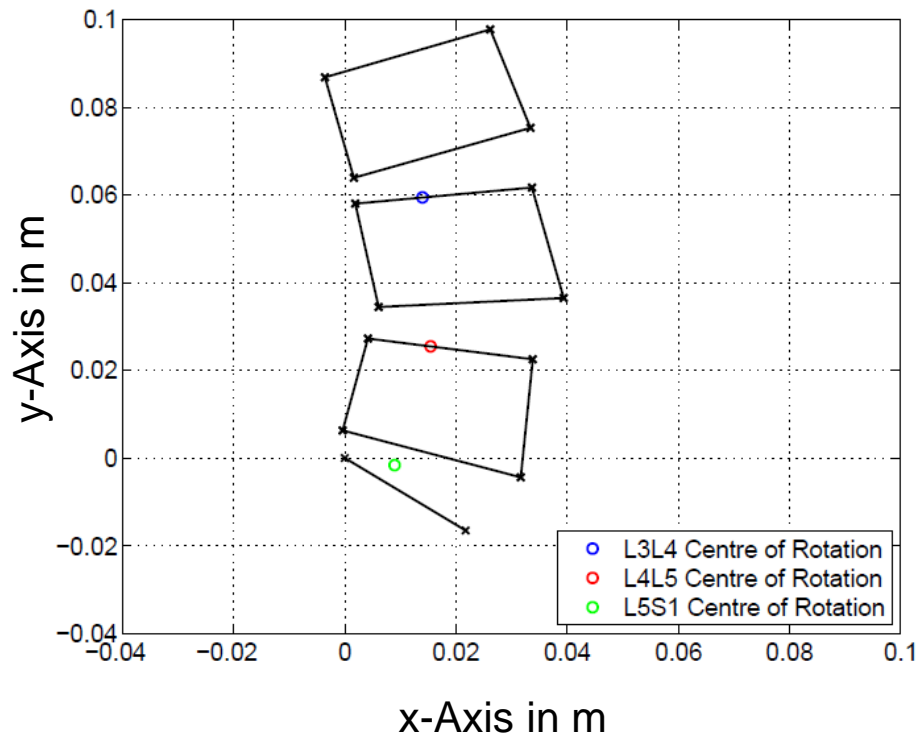


Source: Ortho Kinematics, Inc.

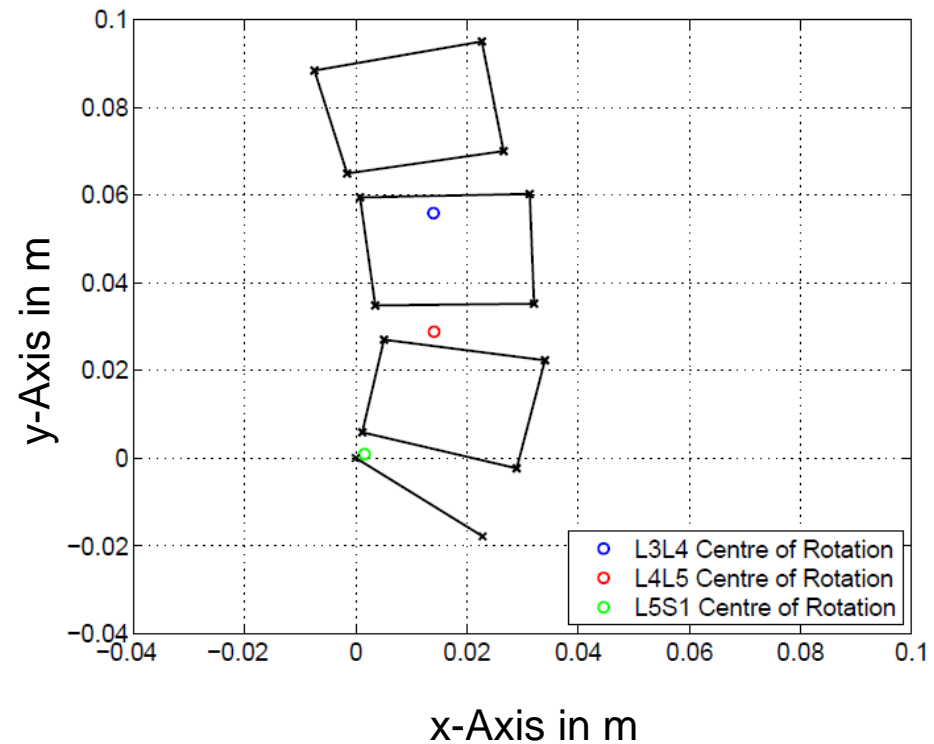


Axes of rotation

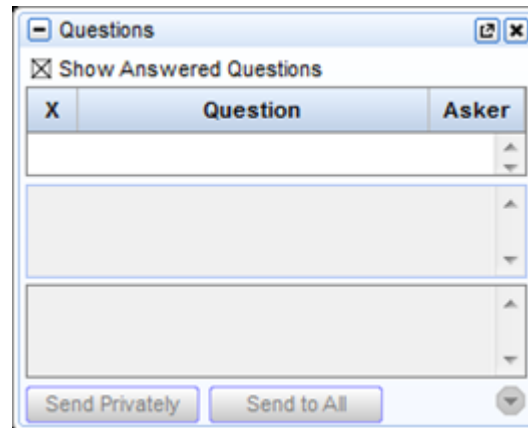
Modified musculoskeletal model



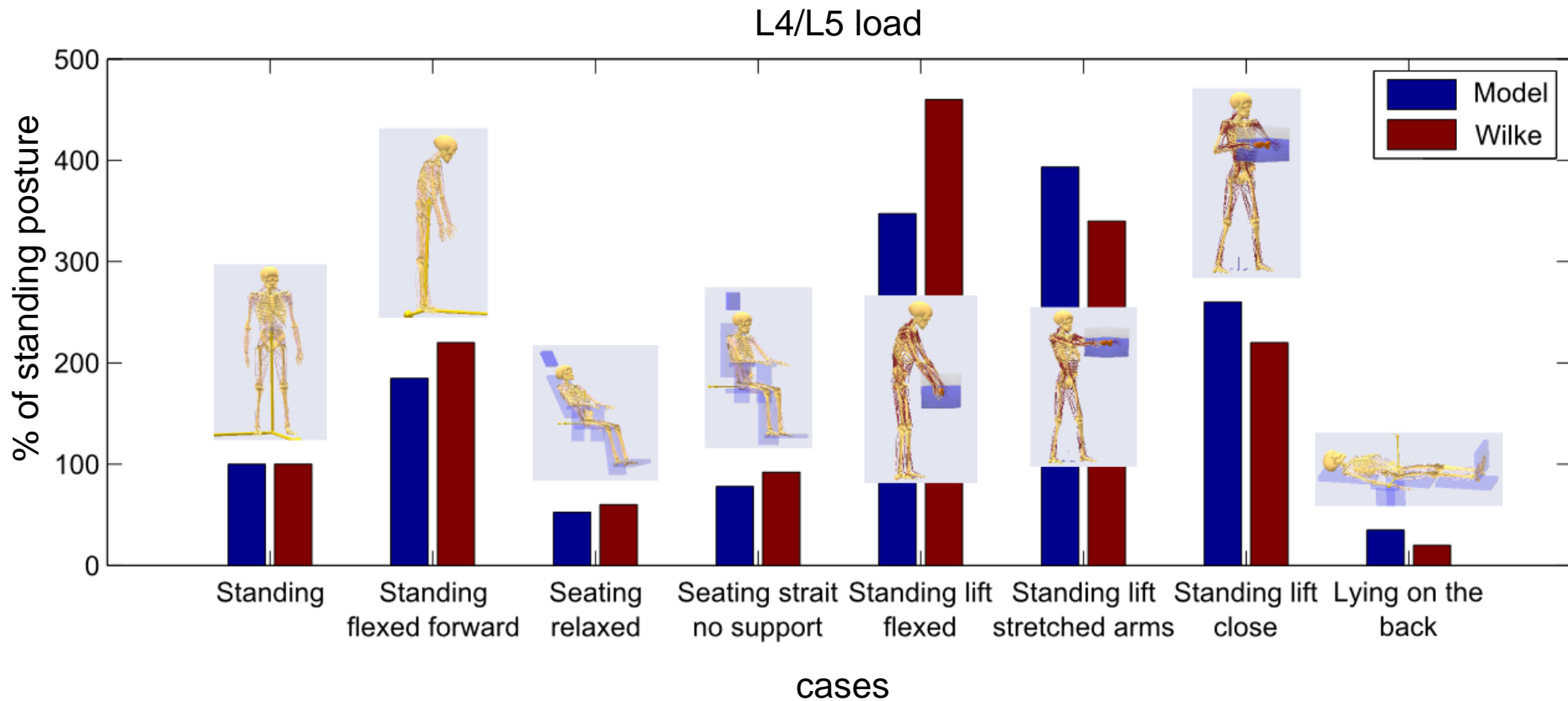
fluoroscopic recordings of one subject



Reminder for questions



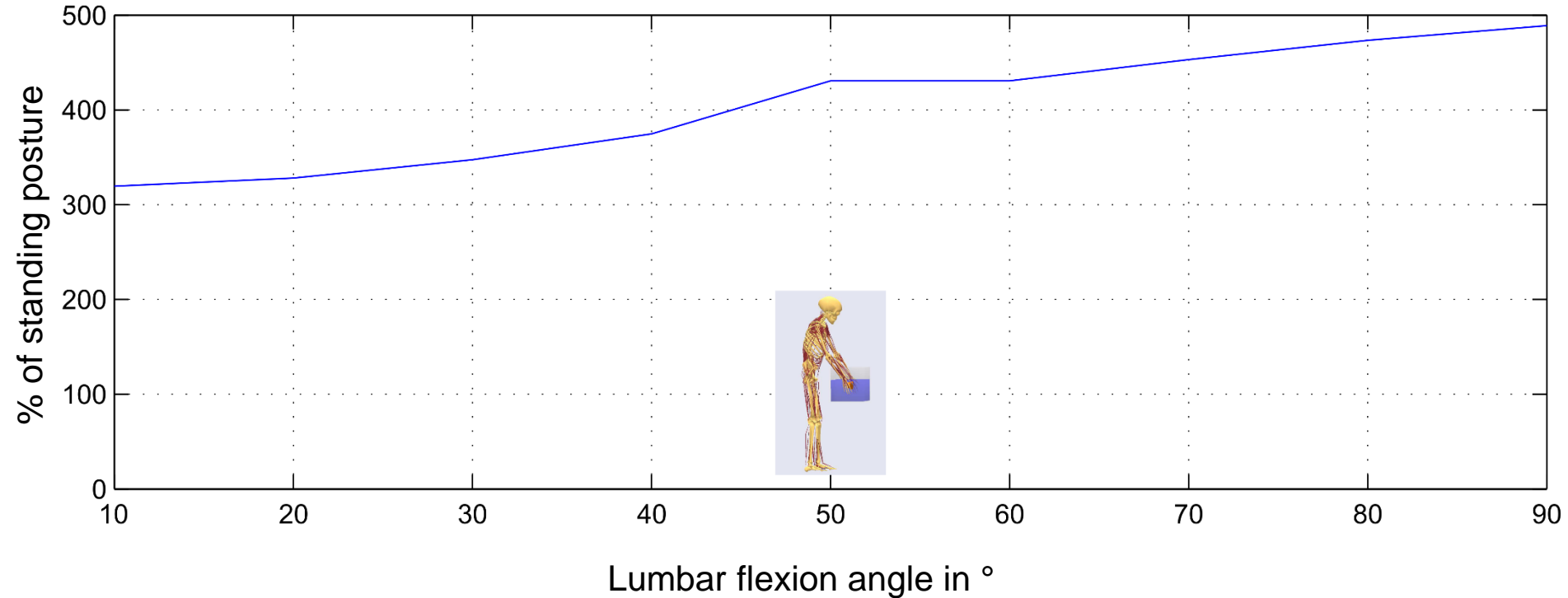
Validation



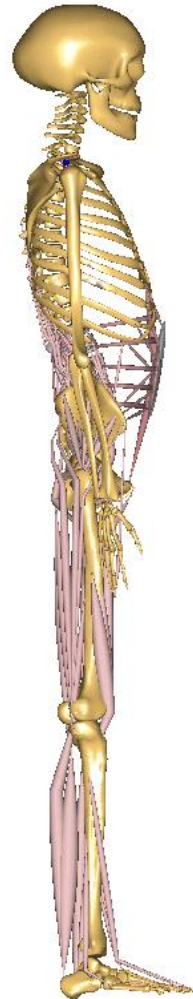
Wilke et al., 2001

Validation

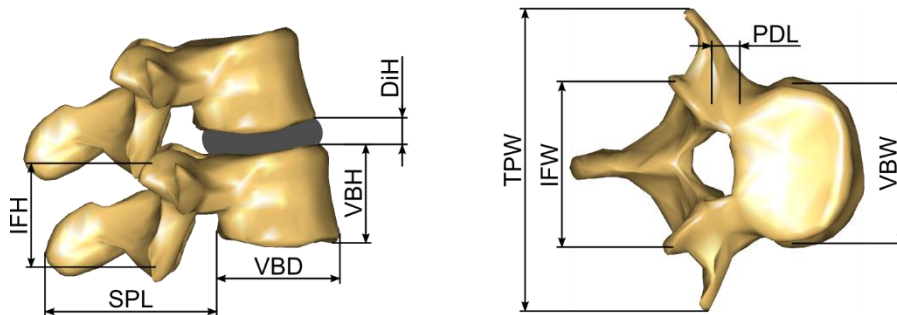
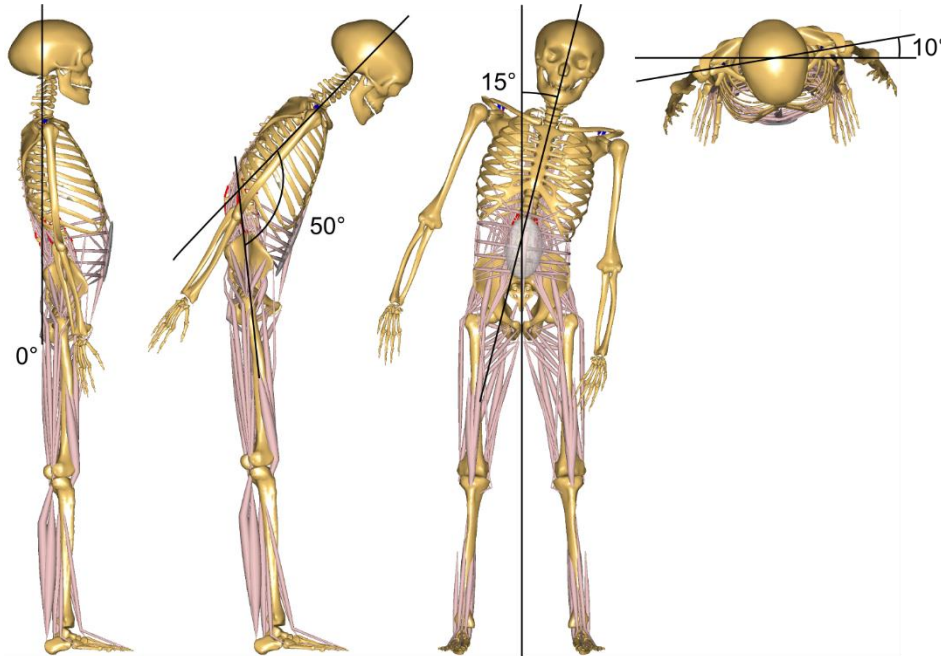
L4/L5 load for the standing flexed posture with a weight over different flexion angles



Body movements



Study – Vertebral dimensions

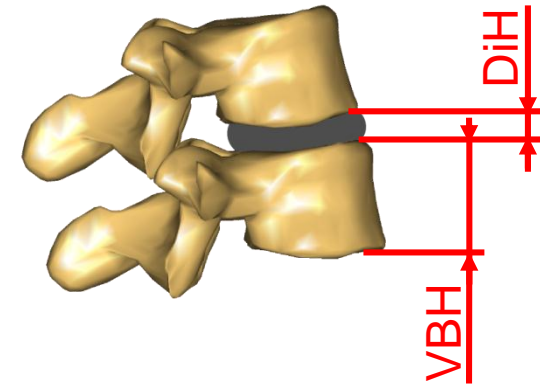
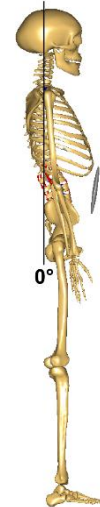
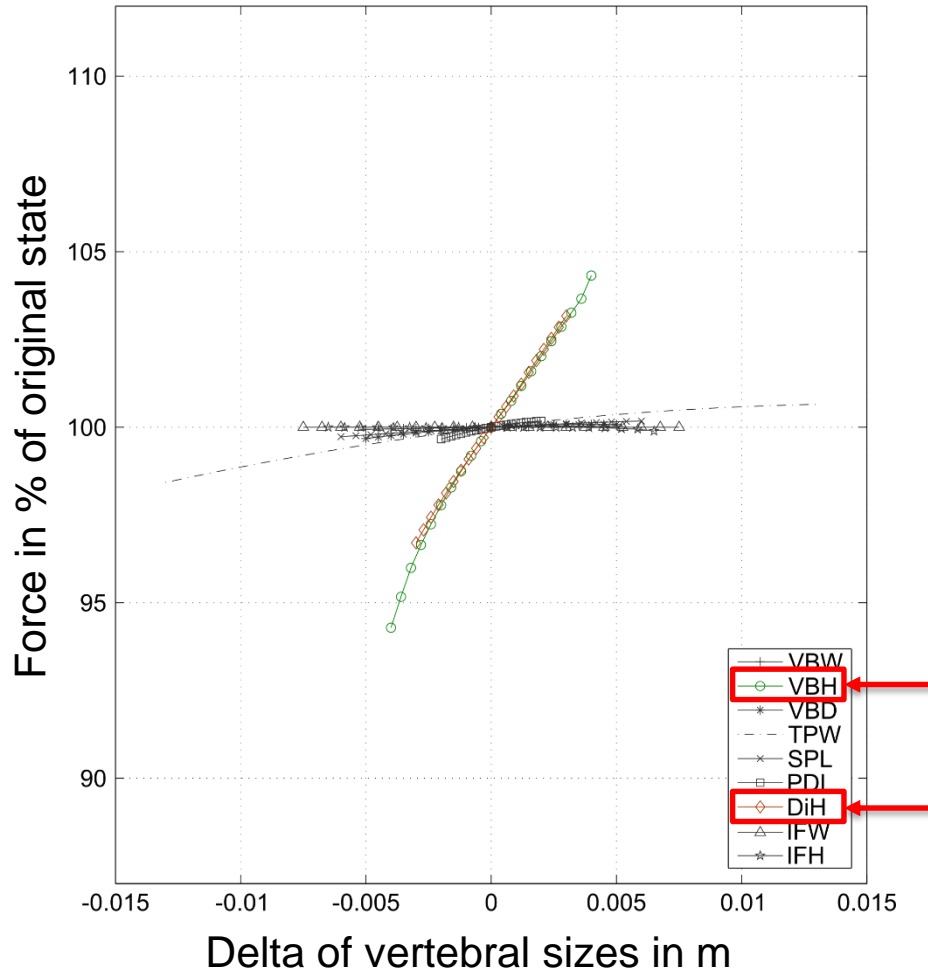


Parameter	Abbreviation	Interval in mm
Vertebral body width	VBW	+/- 5
Vertebral body height	VBH	+/- 4
Vertebral body depth	VBD	+/- 5
Transverse process width	TPW	+/- 13
Spinous process length	SPL	+/- 6
Pedicle length	PDL	+/- 2
Disc height	DiH	+/- 3
Interfacet width	IFW	+/- 7.5
Interfacet height	IFH	+/- 6.5
		Interval in °
Curvature of the lumbar spine (Lordosis angle)	LOR	+/- 5

(Berry et al., 1987; Panjabi et al., 1992; Panjabi et al., 1993; Scoles et al., 1988)

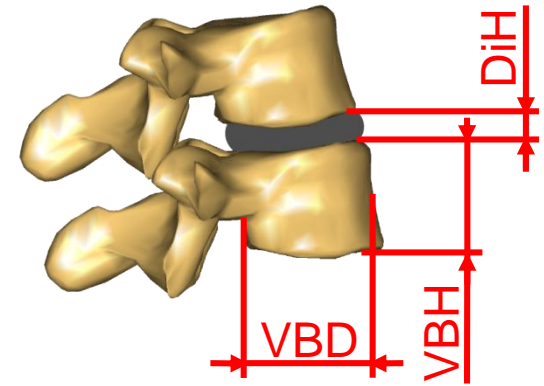
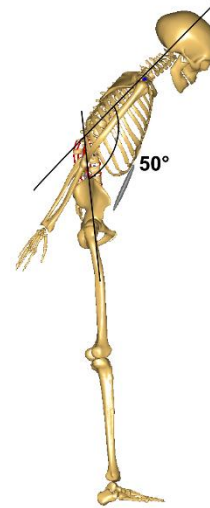
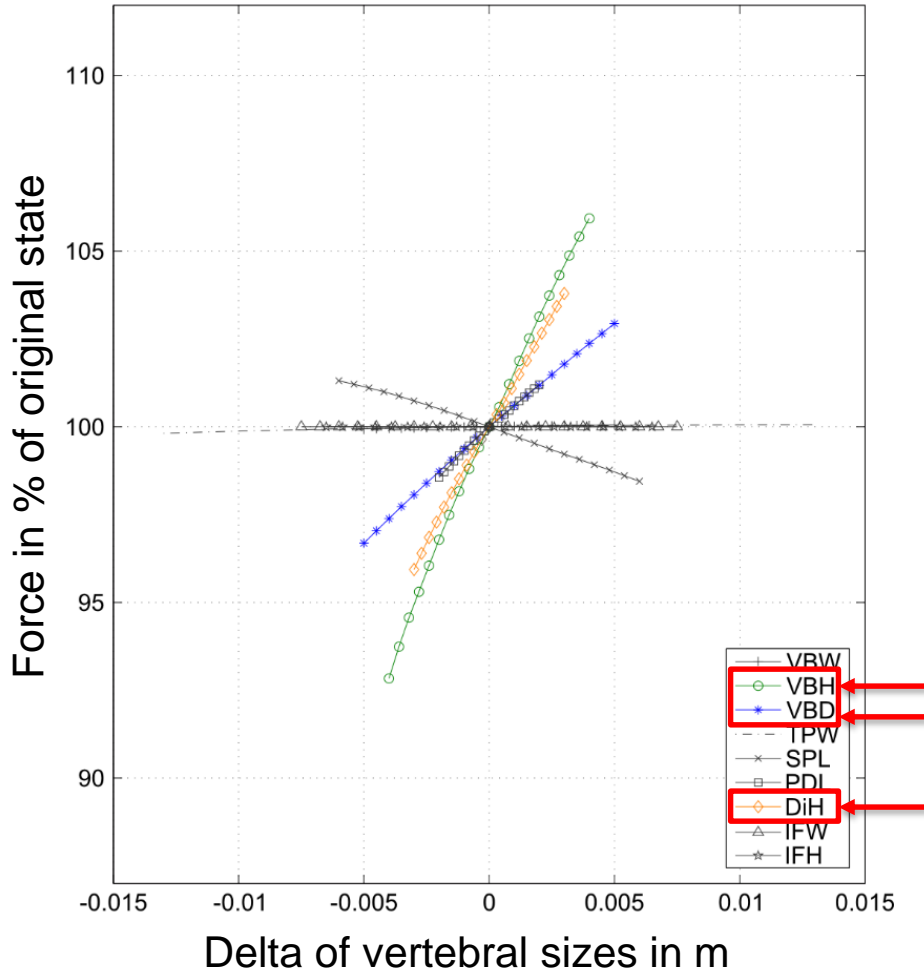
Results – Single Parameter (upright standing)

L4/L5 joint load; upright standing



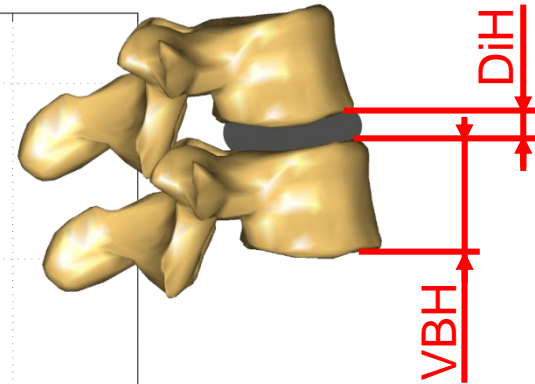
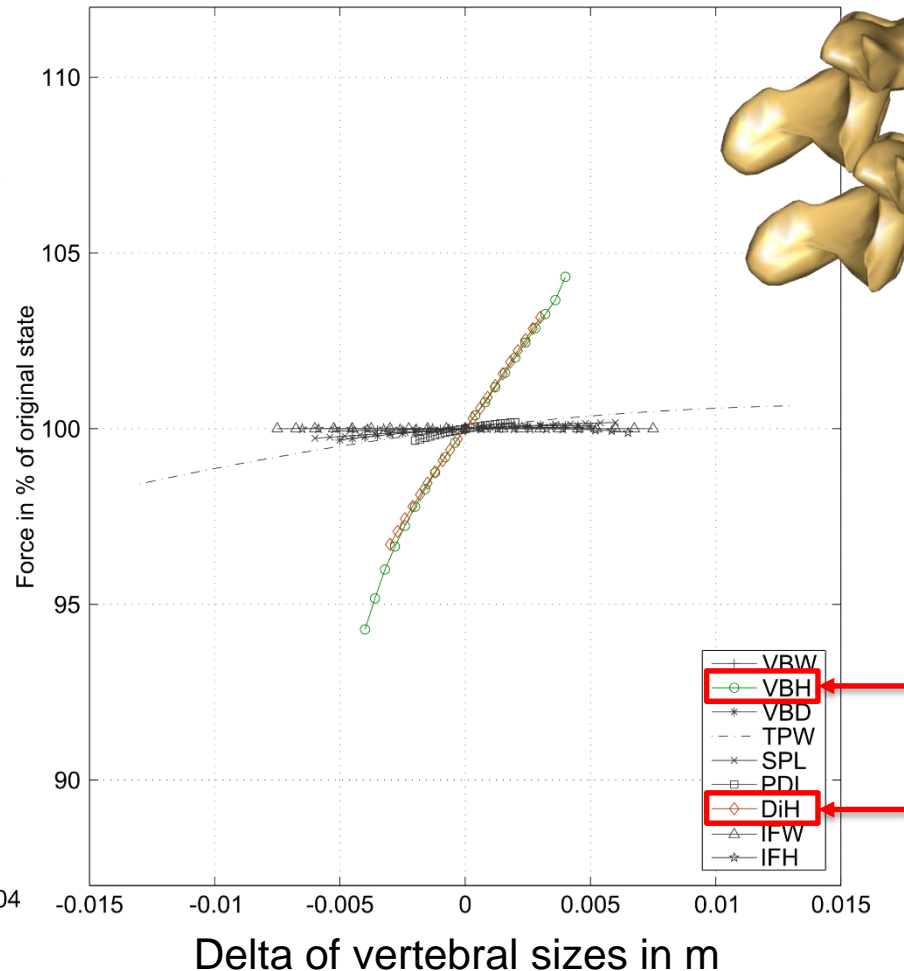
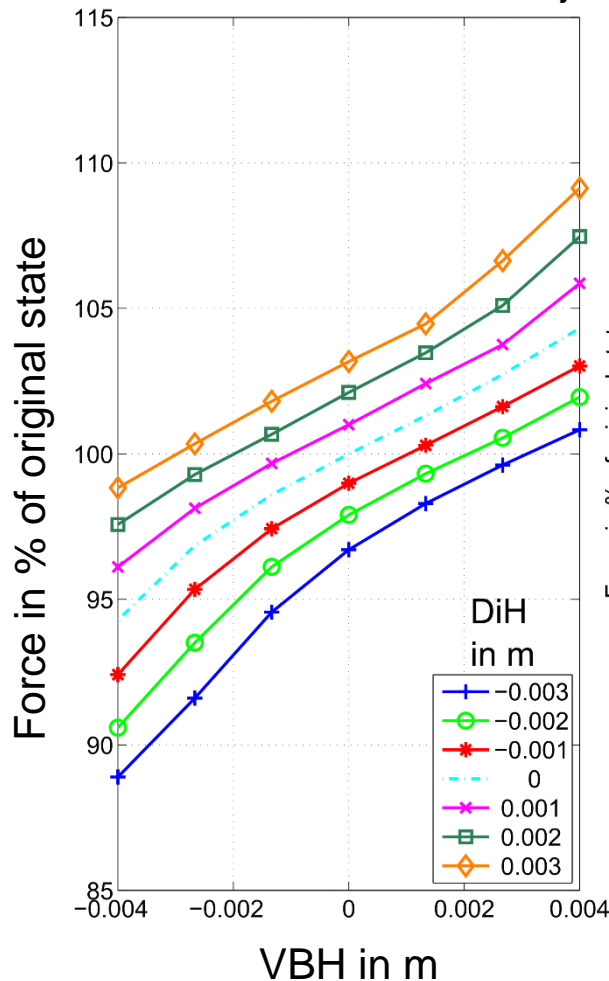
Results – Single Parameter (flexion)

L4/L5 joint load; flexion



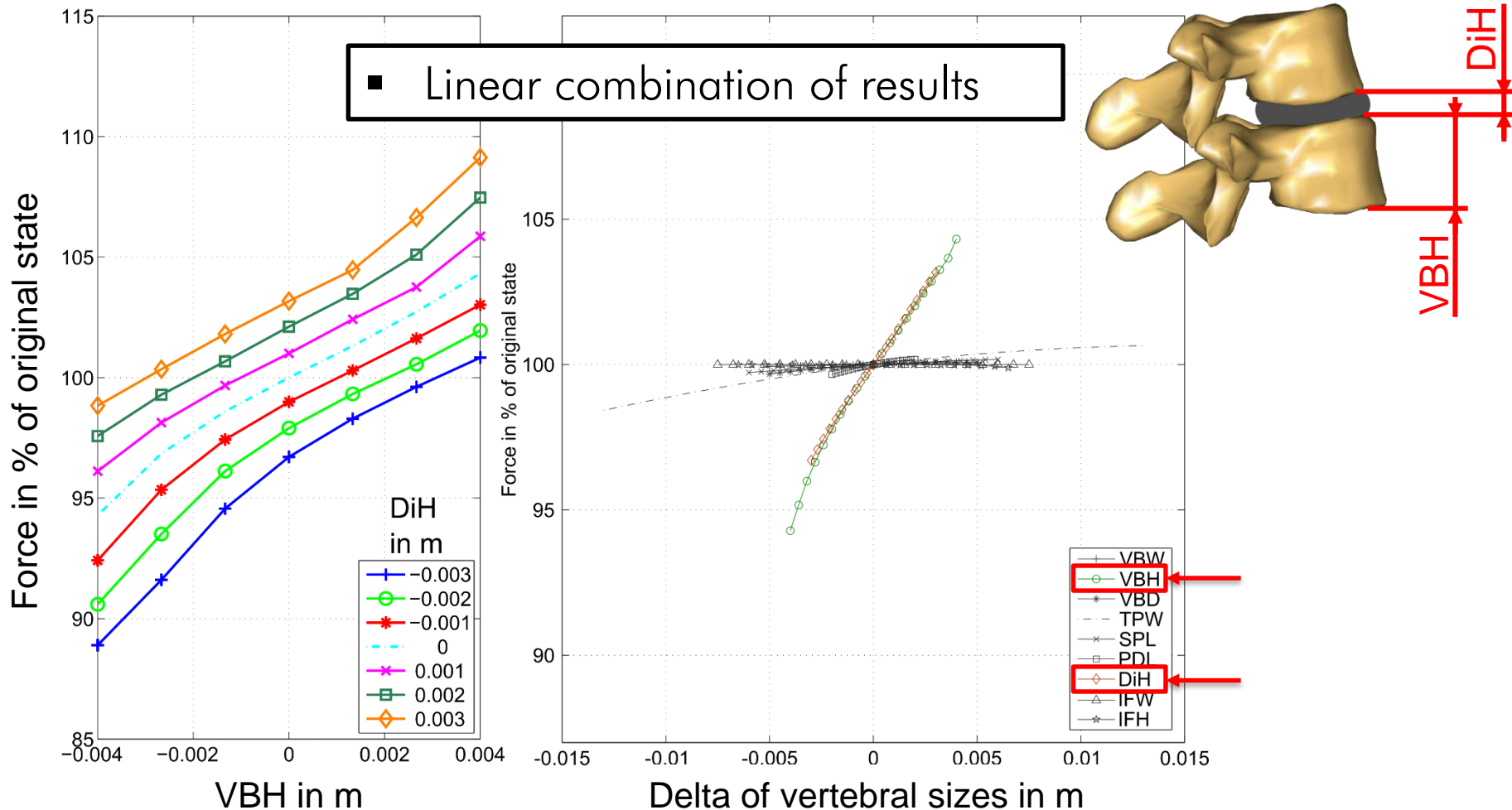
Results – Combinations (upright standing)

L4/L5 joint load; upright standing



Results – Combinations (upright standing)

L4/L5 joint load; upright standing

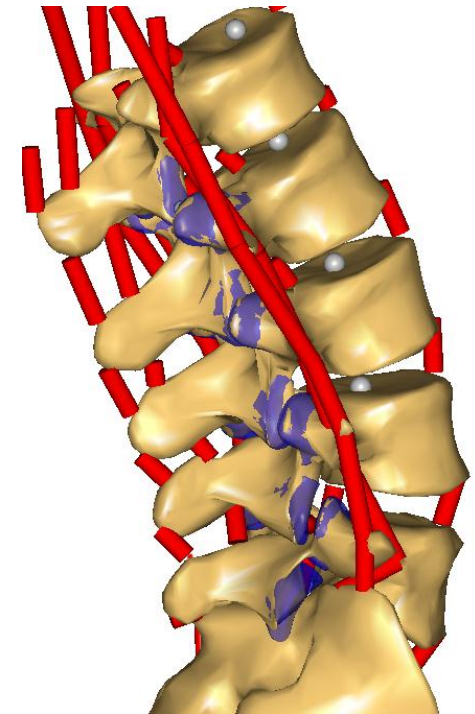


Study – Ligament stiffness

- Constitutive model for ligament force:

$$F_1 = k \cdot \epsilon_{s1} \cdot L_0$$

- Variation of ligament stiffness (k) (Pintar et al., 1992)
- 3 different subjects (adjusted kinematics)
- Flexion movement



Influence on lumbar disc loading?

Results – Ligament stiffness

Relative changes in disc loading	Subject 1	Subject 2	Subject 3
L3/L4	9%	14%	7%
L4/L5	17%	23%	18%

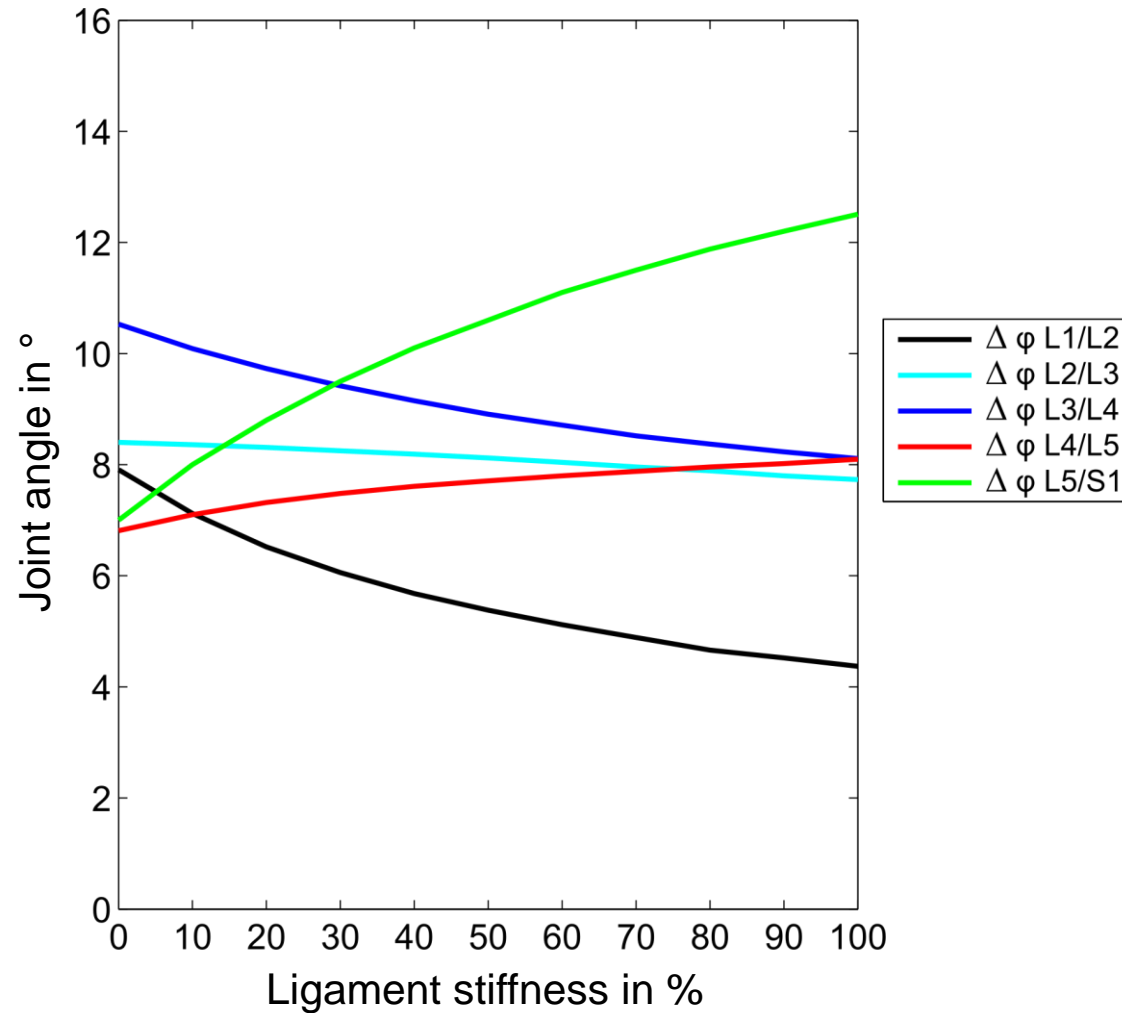
Increased ligament stiffness lead to:

- Increase of loading in ligaments and discs
- Lower disc gets more relative loading

Results – Ligament stiffness

Increasing ligament stiffness:

→ Motion shifts to the lower segments



Conclusion I

- The results indicate that measurements of vertebral body height and depth as well as disc height and curvature of the spine could be sufficient to build a subject-specific model of the lumbar spine.
- Those dimension can be taken from radiographs.
- Lower radiation exposure.
- Fast access to a subject-specific model in pre-operative planning.

Conclusion II

- Increasing ligament stiffness
 - increases disc loading 23%
 - Shifts motion to lower lumbar parts
- Possible clinical implications:
 - Degeneration affects spine kinematics and kinetics in different parts of the spine